

# Mesa County Caucus & Assembly 2024

Let's Talk About the First Steps to the 2024  
General Election!





# TABLE OF CONTENTS

01

## WHAT IS CAUCUS

What is caucus and who  
can participate?

02

## WHAT ARE ASSEMBLY & CONVENTION

What are Assembly and  
Convention?

03

## WHEN & WHERE IS CAUCUS/ASSEMBLY?

When is caucus &  
assembly?

04

## TIMELINE & EVENTS

What to expect in Caucus  
season

05

## HOW TO BE A DELEGATE

Who can be a delegate,  
and how

06

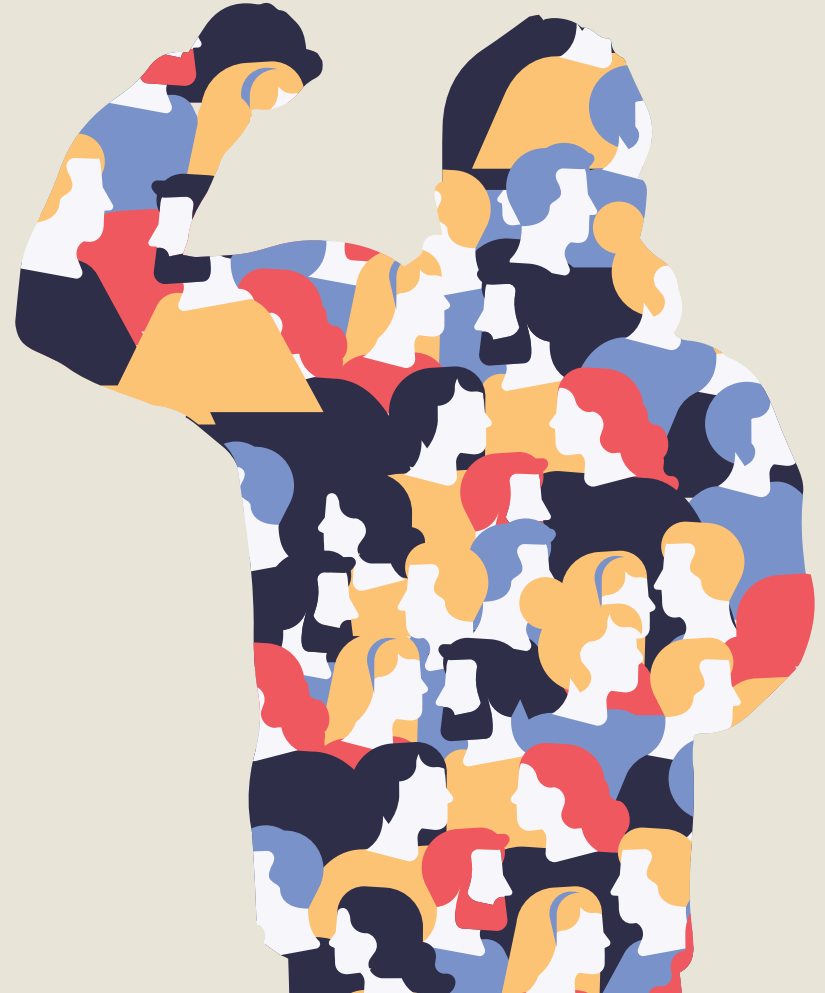
## OPEN FLOOR QUESTIONS

Your chance to ask  
questions!

01

# WHAT IS CAUCUS

WHAT IS IT, WHY DO WE DO IT, AND WHO  
CAN PARTICIPATE?



# WHAT IS CAUCUS?

Caucus is a gathering of members of a political party to elect delegates to assembly.

- Designate candidate preference through STRAW polls
- Elect Precinct Organizers
- Elect delegates to attend assemblies





# WHY CAUCUS?

Caucuses are perhaps outdated, but they are still important! Caucuses allow Democrats to connect with their party on the most grassroots level, and meet like-minded folks in their community. We elect our Precinct Organizers at caucus, one of our most important positions!

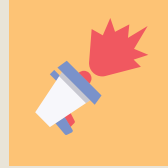


# WHO CAN PARTICIPATE?



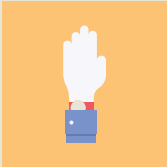
## RESIDENCY

Must be resident of the precinct they are voting in for at least 22 days



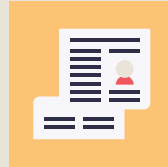
## REGISTRATION

Must be a registered Democrat



## AGE

18 years of age or older



## ATTENDANCE

Anyone can attend, but only those meeting the above req's may vote



# CAUCUS AGENDA

## AGENDA ITEM

## PURPOSE

1

Check in and  
Registration

Verify eligibility and voting  
status of attendees

2

Read Rules

Give everyone an  
understanding of the rules

3

Take Any  
Desired  
Straw Polls

Let's caucus attendees know  
where potential delegates  
stand

4

Elect Precinct  
Organizers

Our on the ground organizing  
structure!

5

Elect  
Delegates

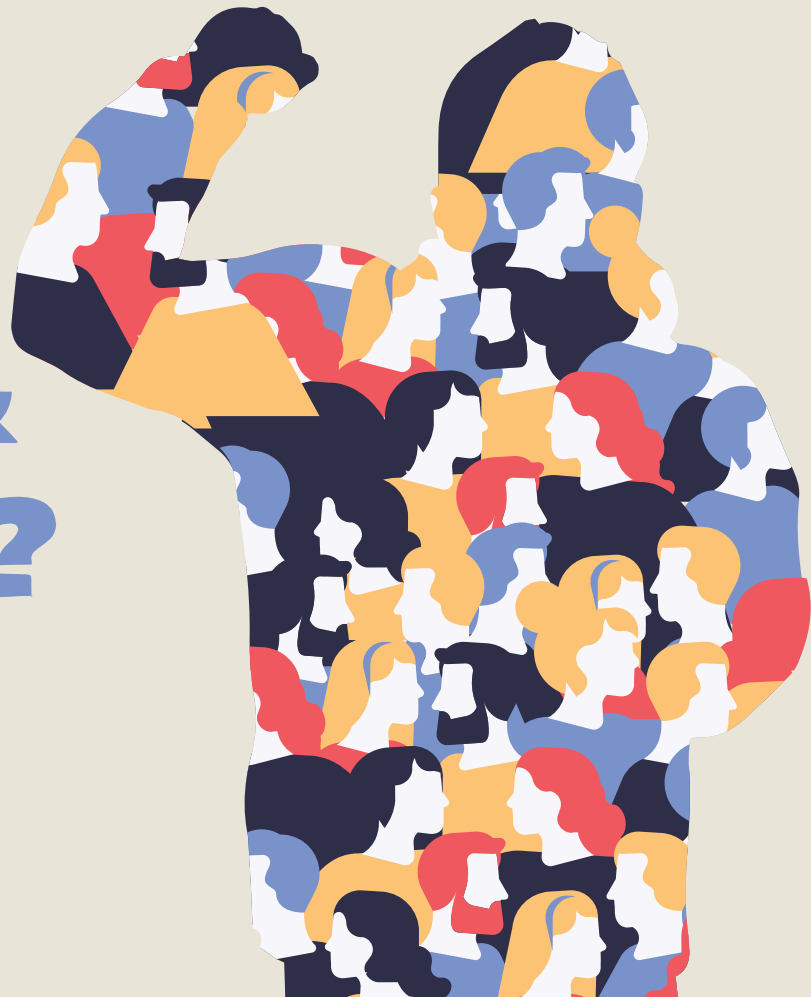
To County Assembly



# 02

## WHAT ARE ASSEMBLY & CONVENTION?

WHAT ARE THE DIFFERENCES BETWEEN  
ASSEMBLY AND CONVENTION? WHAT ARE  
THEIR PURPOSES?





# WHAT IS ASSEMBLY?

Assembly is a gathering of delegates to declare their candidate preference for primary election ballots and elect delegates to higher-level assemblies.

- Designate candidate preference through PREFERENCE polls
- Elect delegates to attend assemblies
  - Multi-County Assembly
  - Congressional District Assembly
  - State Assembly



# WHAT IS CONVENTION?

Convention is a gathering of delegates to elect delegates to higher-level conventions for the purpose of selecting a nominee for President.

- Delegates are elected to elect other delegates to go on to the Democratic National Convention
- County Convention elects delegates to State and Congressional District Conventions
  - At State and Congressional District Convention, delegates are elected to National Convention.



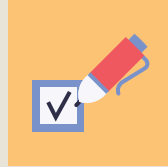
# 03

## WHEN & WHERE CAUCUS & ASSEMBLY

HERE ARE THE DETAILS FOR THE MESA  
COUNTY CAUCUS AND ASSEMBLY



# WHEN & WHERE ARE CAUCUS & ASSEMBLY?



## WHEN

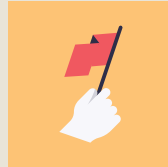
Caucus & Assembly are held on the same day - March 9th, 2024

Caucus:

- Registration Begins @ 8am
- Caucus Begins @ 9am

Assembly:

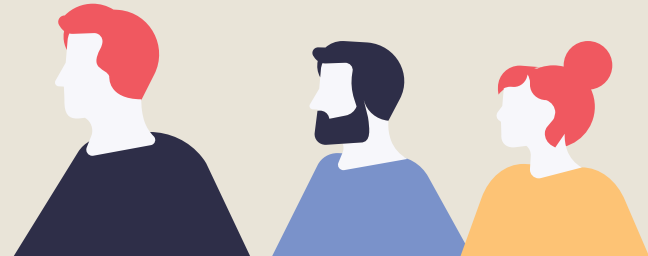
- Assembly Begins @ approx. 1pm



## WHERE

### MASONIC LODGE

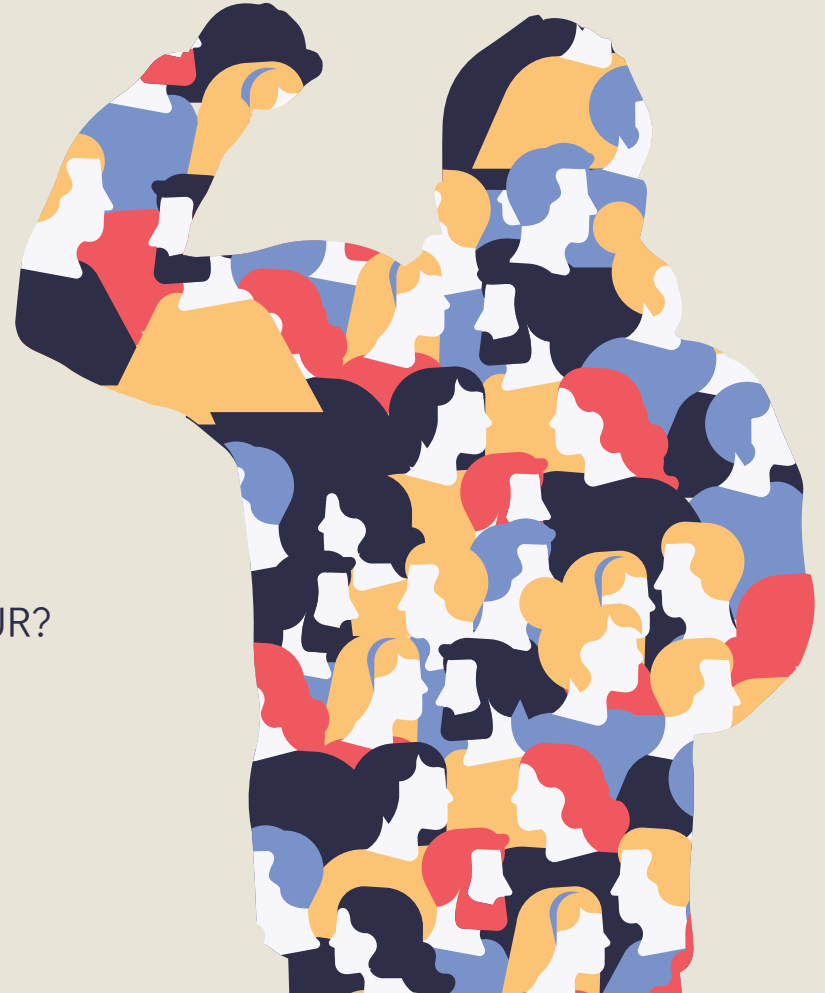
Grand Valley Event Center  
2400 Consistory Court  
Grand Junction, CO, 81501



# 04

## **TIMELINE & EVENTS**

WHAT ARE THE STEPS AND WHEN DO THEY OCCUR?



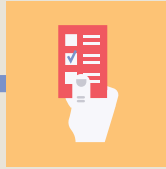
# Timeline & Events

Must attend in person!



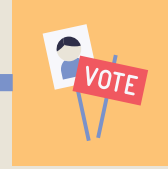
## CAUCUS

First step, elects delegates to county assembly



## COUNTY ASSEMBLY

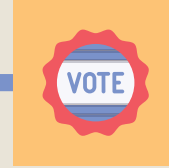
2nd step, candidate preference @ county level  
Elect delegates to multicounty & state



## MULTI-COUNTY ASSEMBLY

3rd step, candidate preference @ multi-county level  
Ex. CD3, HD54

Virtual Options for Attendance Available!



## STATE ASSEMBLY

Final step, candidate preference @ state level



05

# HOW TO BE A DELEGATE

HOW CAN YOU BE A DELEGATE?





# ANYONE CAN BE A DELEGATE!

If you want to be a delegate, you simply have to declare your desire to be one at Caucus and be committed to attending County Assembly (same day).

At County Assembly, you will submit your name to be a delegate to Multi-County and State Assemblies and be voted on. Rarely are enough people asking to be delegates that it becomes contested.