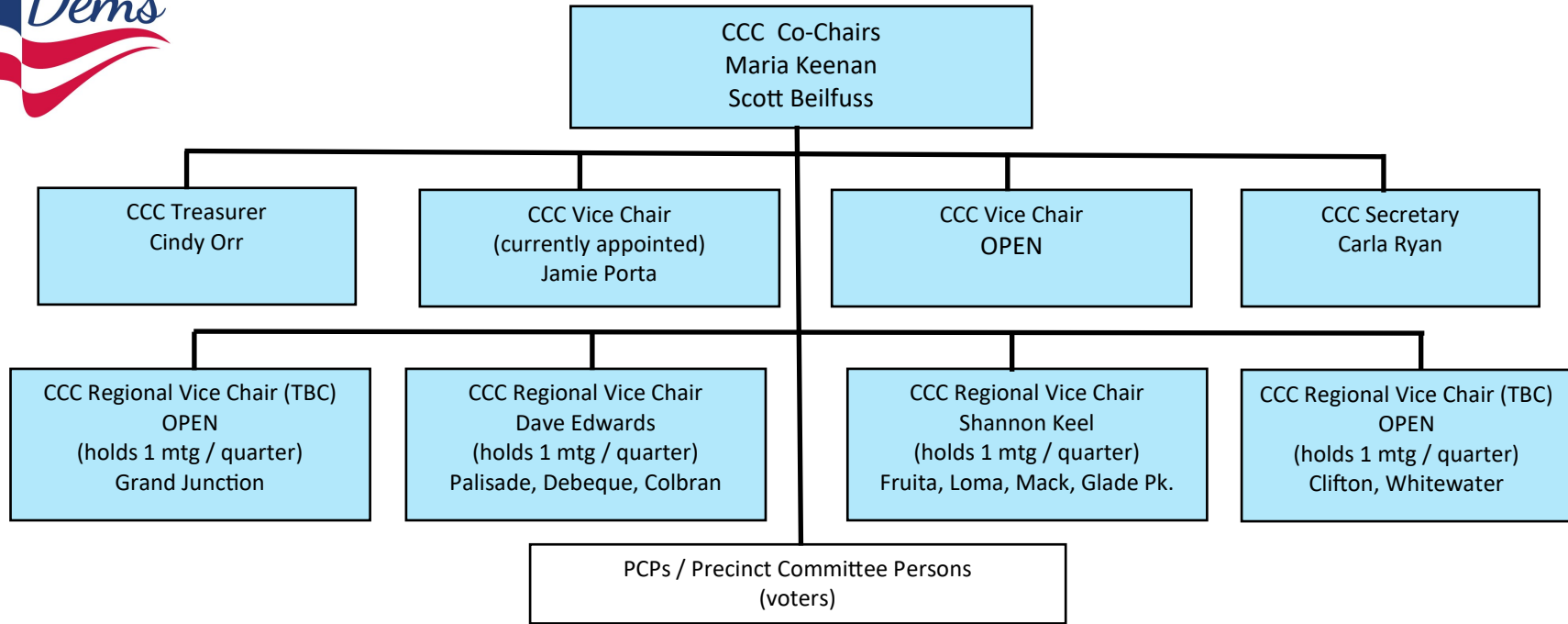




County Central Committee (CCC) Board

Officers = BLUE boxes

Ver. MAR 23, 2021



County Executive Committee

(This is an elected **advisory** committee to the CCC Board. They attend monthly meetings and are available for special votes.)

Mary Beth Pyle Shannon Keel Michael Ryan	Cindy Cyphers Constance Combs OPEN	OPEN OPEN OPEN OPEN
--	--	------------------------------

MCD Committees

(Overseen by Vice Chairs or Co-Chairs; Committee Chairs are appointed by the CCC Board)

Communications Committee Chair, Shanna Shepherd Carla Ryan and Katie Larson (Scott Beilfuss)	Volunteers Committee Co-Chairs Treva Houck / Fran Higgins (Scott Beilfuss)	Mesa County Women's Group Leadership Team Treva Houck / Fran Higgins Jamie Porta / Constance Combs (Maria Keenan)	Fundraising Committee (temporary) Chair Maria Keenan	Candidates & Issues Committee CHAIR—OPEN
---	---	---	--	--